



**MULEKA
INVESTMENTS LTD**

Company Profile



MULEKA INVESTMENTS LTD

Contact Details

- **Lusaka Office**

Plot No. 483 Off Warthog Way - Lusaka
Contact: +260 969 374 795 / 965 888 832

- **Kitwe Office**

Plot No.3037Kabwe Road - Industrial Area - Kitwe
Contact: +260 969 374 795 / 977 656 540 / 961 518 422

- **Email**

mulekainvestmentsltd@gmail.com / info@mulekainvestments.com

Bank Details

Account Name: Muleka Investments Ltd
Acc. No.: 62660058077
Acc. Currency: USD
Branch Code: 260212
Swift Code: FIRNZMLX
Bank Name: FNB
Branch Name: Kitwe Main Branch

Account Name: Muleka Investments Ltd
Acc. No.: 62379971552
Acc. Currency: ZMW
Branch Code: 260001
Swift Code: FIRNZMLX
Bank Name: FNB
Branch Name: Kitwe Main Branch

ESTABLISHMENT YEAR

Muleka Investments Limited is a Zambian registered company, registered in 2009 and was incorporated in the Republic of Zambia in 2010, on 15th of October as a private limited company by shares.

The company has its head office in Kitwe, Zambia. Muleka Investments Limited has a variety of products its supplies and delivers in the following fields: Transport, Electrical, Mining, Mechanical, Civil Engineering and Industrial supplies to its targeted customer base. Currently the company is registered with National Council for Construction to enhance itsa operations in the industry.

The company is looking at getting involved in various activities that will contribute to the diect development, mostly by sustaining the operations in our mines and other organisations in Zambia. Its Directors have a track record of fulfilling each and every contract entered into with full satisfaction of the clients from the past experience.

Contact Details

Lusaka Office Kitwe Office

Plot No. 483 Off Warthog Way - Lusaka Plot No.3037Kabwe Road - Industrial Area - Kitwe
Contact: +260 969 374 795 / 965 888 832 Contact: +260 969 374 795 / 977 656 540 / 961 518 422

Email: mulekainvestmentsltd@gmail.com / info@mulekainvestments.com

Bank Details

Account Name: Muleka Investments Ltd	Account Name: Muleka Investments Ltd
Acc. No.: 62660058077	Acc. No.: 62379971552
Acc. Currency: USD	Acc. Currency: ZMW
Branch Code: 260212	Branch Code: 260001
Swift Code: FIRNZMLX	Swift Code: FIRNZMLX
Bank Name: FNB	Bank Name: FNB
Branch Name: Kitwe Main Branch	Branch Name: Kitwe Main Branch

ABOUT US



MISSION

To provide our customers with state of the art engineering services solutions, quality products and develop new markets based on our values and business ethics.



VISION

To be a partner of choice to our customers in the markets we serve, by providing them with services, quality products, technical advice and support.



CORE VALUES

We are committed to:

- *Integrity:* We value loyalty. Honesty and business ethics
 - *Reliability:* We provide excellent customer service and standards
 - *After Sale:* We ensure customer satisfaction and customer retention
-



OUR STRENGTH INCLUDE

- Size of the company flexible enough to address new market opportunities;
- Customer service/warranty/reputation responsive to customers needs; Experienced & stable workforce;
- In house experience in various forms of fabrication;
- Employee certifications to the highest standards in the industry;
- Extensive experience in custom manufacturing and steel fabrication industries;

The key factor to our success of projects we undertake is the synergy of communication between us as a team in mutual respect to our customers, partners, employees and shareholders and also constant communication with our clients.



OBJECTIVES

Build and manage the company to reach an international resonance
Build and grow the market in Zambia and Africa.

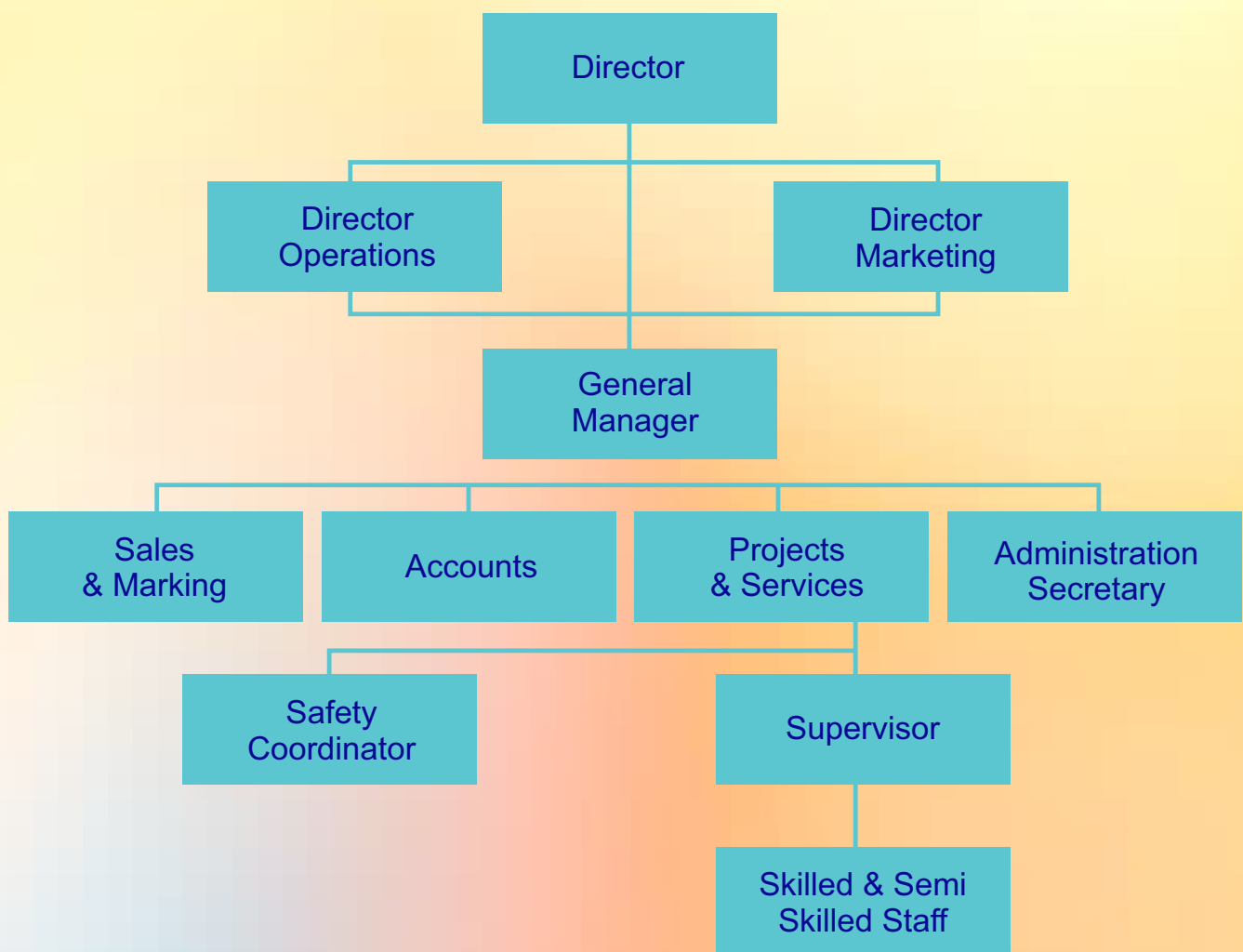
STRATEGY

We engage with our customers to learn about their needs and allow us to produce innovative results for their needs.

PRODUCTS

- Mining Supplies
- Protective Clothing and Equipment
- Suppliers of Fertilizers and Food Stuffs
- Building Materials
- Hardware and Accessories
- Auto Engine Control and Monitoring Systems
- Electrical Cable
- Battery Chargers, Invertors and Generators
- Switchboards, Starters & Panels
- Fittings, Fixtures & Consumables – Lights, Power Outlets, etc...
- Electrical spare Parts and Accessories
- Industrial Electric Motors
- Alarm and Monitoring Systems
- Industrial applications
- Technical Engraving – Engraved Panel and Labels
- General Industrial Supplies
- Stainless Submersible Pumps, Centrifugal Pumps
- Jaw Crusher Spares
- Conveyer Belts
- Speed Reduction Gear Boxes
- Electrical Switch Gear

ORGANIZATION STRUCTURE



Fertilizer



Muleka Investments Limited is one of companies that believes in diversification to serve better its local as well as international clientele. Muleka has wide range of trucks to assist its customers in logistics and transportation of fertilizer from different source of purchase to any point of delivery around sub saharan regions, the route includes:

- From Beria Mozambique to Zambia
- From Durban to Lusaka (Zambia)
- From Tanzania (Mbeya) to Zambia
- From Zambia Copperbelt to Congo DRC...

With a capacity loads of 100.000 to 200.000 tons.



Trucks

Transportation & Logistics Services



Transportation & Logistics - 30t Trucks



Trucks

Transportation & Logistics Services

Transportation & Logistics 40t Trucks





Fertilizer - Warehouse



SURFACE WORK



Crushers



Crushers



Vibrators



Conveyor Belt

Muleka Investments Limited has an approved world wide source of its products.

Bellow are our products and services the we are able to supply to our clients.

We aim to deliver high quality services to the mining companies across the country considering safety as our number one priority.

- 1.CONVEYOR BELTS
- 2.CRUSHERS
- 3.VIBRATORS
- 4.GEAR BOXES
- 5.IDLERS AND PULLEYS
- 6.DRIVE MOTORS
- 7.BIN AND LINERS
- 8.CONDITION MONITORING
- 9.COMPRESSOR MAINTENANCE
- 10.LIGHT VEHICLES SUPPLY AND REPAIR

UNDERGROUND WORK



Submersible Pump



Centrifugal Pump



Submersible Pump

- 1.SUBMERSIBLE PUMPS
- 2.CENTRIFUGAL PUMPS
- 3.VENTILATION FANS
- 4.ELECTRICAL BOXES
- 5.ELECTRICAL DISTRIBUTION- PROTECTION
- 6.UNDERGROUND DUMP TRUCKS (MAINTENANCE)
- 7.UNDERGROUND LOADERS (MAINTENANCE)
- 8.UNDERGROUND ANCILLARY EQUIPMENT (MAINTENANCE)
- 9.DRILL RIG (MAINTENANCE)
- 10.UNDERGROUND DEWATERING SYSTEMS
- 11.CIVIL WORKS
- 12.UNDERGROUND HOIST- MAINTENANCE





UNDERGROUND DUMP TRUCK MAINTENANCE



UNDER GROUND WATER

Introduction

Groundwater is the water present beneath Earth's surface in soil pore spaces and in the fractures of rock formations. A unit of rock or an unconsolidated deposit is called an aquifer when it can yield a usable quantity of water. The depth at which soil pore spaces or fractures and voids in rock become completely saturated with water is called the water table. Groundwater is recharged from the surface; it may discharge from the surface naturally at springs and seeps, and can form oases or wetland.

Dewatering and groundwater control is an important part of both underground and surface (Open pit) mining. When mining below the water table, groundwater is an inevitable challenge. On some projects, groundwater could be a minor impediment that can be dealt with on an ad-hoc basis. However, on other schemes, and in other geological settings, planning and execution of dewatering could be fundamental to the viability of the mine and may require very large resources and management intervention.

Most underground mines generate huge volumes of water from underground aquifers and this water has to be pumped out of the mine to enable mining activities. Otherwise if this water is left to accumulate underground, it becomes a hazard to both equipment and personnel, at the same time making production areas inaccessible.

During the feasibility study of a mine, it is important to understand the geological characteristics of an area as this helps in determining the dewatering strategy or method.

It must also be known that in some instances, the determination of the ground water influx into the mine may not be accurate, therefore, the dewatering strategy or plan should always take into consideration at least 50% redundancy.

Water accumulation and related hazards can put workers in underground mines at risk. These hazards can cause serious injuries, and even death, to workers.

Incidents can be prevented by ensuring:

- i. Pumping systems (sumps) are capable of removing excess water from the workplace.
- ii. Associated infrastructure (drain holes and lines) for pumping systems are maintained and kept free of obstructions.



UNDERGROUND DEWATERING SYSTEMS



- iii. Workplaces are aware of how the improper use of water can have very dangerous and catastrophic outcomes.

Employers are responsible for protecting workers from hazards arising from the improper use or accumulation of water.

Some hazards workers can be exposed to include:

- i. An unexpected or unannounced run of material (dirt or ore) caused by infiltration of water into material handling systems.
- ii. Workers drowning while performing maintenance on a pumping system, or getting trapped while clearing obstructions from a drain hole that can cause powerful suction.
- iii. Trips and falls on hazards such as rocks or other material hidden beneath accumulated water, causing musculoskeletal disorders.

It should therefore be noted that mining below groundwater level presents many challenges and can result in increased mining costs and reduced efficiency through such occurrences as flooding. However, if there is a good programme of hydrogeological characterisation and if the dewatering and depressurisation methods are carefully selected, safe and efficient working conditions can help the mine develop to great depth below the water table.

Early Stage Dewatering

In the early phase of mining, huge stand-alone pump stations may not be required until a certain level of mining is reached where ground water may require to be settled and then pumped to surface in huge volumes. In initial stage of mining, the following configuration may be sufficient:

The pumping of water from underground to surface could be through a cascade pumping system where a number of pumping stations are deployed and may consist of:

- i. **Fixed Pump Chambers:** These encompass all dewatering pump chambers that have permanent infrastructure and may not be moved. These pump chambers are constructed along the decline and pump from one pump chamber to the other and to enhance reliability, each pump station should have a minimum of one standby pump to cater for emergencies (unexpected in-flows).
- ii. **Mini (movable) Pump Stations:** These are pumps built on skids and may be moved from one place to the other and usually receive water from submersible pumps located in working areas.
- iii. **Portable Pumps:** These are of a submersible nature, portable and installed in mining/production areas to ensure that water in mining work areas is kept to a bearable minimum.

Caution

The challenges associated with the current system if run along the decline (roadways) could be:

- i. **Damage to the roadways:** If the dewatering pipelines run along the decline (drive way) there is a greater chance of damaging the roadways through erosion each time there is a pipe failure. This condition maybe counterproductive as it retards the movement of production vehicles.
- ii. **Inadequate capacity:** If the pipes are not anchored properly, there is a greater possibility of the pipes being damaged by moving mobile equipment.

To this effect, there is need to run the piped through boreholes and where possible, grout the piped in these holes to avoid shaking of pipes which usually leads to pipe failure from joints. The advantages of this system are that:

- i. The pipes are protected from damage by heavy mobile equipment.
- ii. The cost of pipes is significantly reduced (in terms of distance).
- iii. Maintenance cost of pipes in reduced.
- iv. The roadways are preserved, hence, improved productivity.

The size of pumps to be installed in each location depends on the amount of water generated.

On the other hand, the choice of pump in terms of the head will be determined by the mining method, however, where required mining may be asked to develop a pumping chamber at a desired level of the mine without necessarily following the mining standard levels. Figure 1 shows a typical example of a pump set-up before the main pump chamber installed.

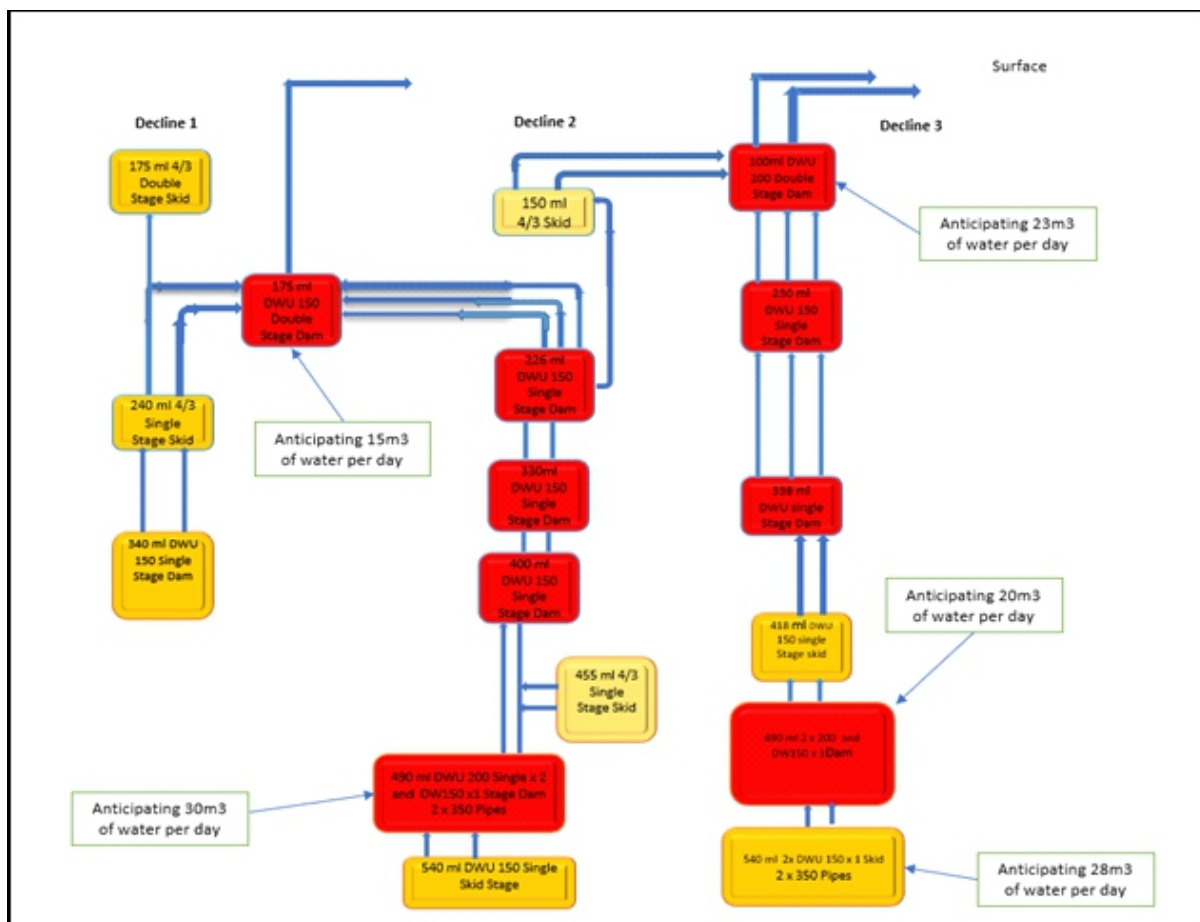


Figure 1: Pumping Network

With this set-up is arranged in such a way that:

- i. The work areas are equipped with various submersible pumps ranging from 8KW, 18KW, 22KW, 37KW, 54KW and 60KW to name a few. These pumps collect all the water from mining faces as well as water from drilling machines and other service activities. Note that the size of submersible pump will be determined by the amount of water generated in a specific area.
- ii. From the submersible pumps, water is pumped to the next level equipped with skid pumps. The use of skids allows for easy movement of the pump station. These skids are equipped with centrifugal pumps and may range from 4x3 to 6x4 depending on the amount of water received in the tank as well as the flow rate.
- iii. The water from the pump skids is then channeled to the permanent dams which are equipped with bigger centrifugal pumps. To avoid silting of the dams, the dams are usually provided with agitating systems which keep the slug particles in motion at all times.

Accessories and their Importance

The accessories which the pumps go with and important to the pumping circuit in both pumping reliability and safety of personnel. The follow is worth noting:

- i. **Valves:** valves must be of a correct design and pressure rating. If this is not followed, valves may explode and cause serious damage to equipment and injury to personnel.
- ii. **Pipes:** Pipes must equally be of the correct classification for the duty applied, otherwise a series of pipe bursts may be experienced. This condition may be counterproductive.
- iii. **Pressure gauges:** Pressure gauges are important in the system for monitoring system pressure.
- iv. **Flowmeters:** These are critical in the system to help understand the amount of water being pumped out from specific locations and the grand total pumped to surface. These figures are equally significant in planning for future pumping infrastructure.

With this kind of cascade dewatering system, it is always important to ensure that the critical pump sets at different levels are automated in such a way that when there is a fault on the upper pumps, the lower level pump automatically shut off to avoid flooding of the upper levels.

Mature Stage of the Mine (high level pumping)

When mining operations are at an advanced stage with huge volumes of water being generated from the mining faces and other associated mining areas, the construction and commissioning of bigger permanent pump stations should commence. This stage usually involves high volume high head pumps such as the multistage centrifugal pumps.

Most of these pumps, however, require cleaning water to avoid high wear rate of the internal pump parts such as the impeller, neck rigs and bushes to name a few.

When constructing these pump chambers, it is also important to incorporate settling ponds in the design. These may be sumps designed to collect silt at the bottom of the pond or a screw that is made to separate silt from water. The use of pressure chambers is also practical though its use is now being taken over by the use of the grid screw system. Therefore, with the bigger pump chambers, slurry must first be settled down before the water is finally discharged into the main sump for pumping.

The size of pumps and motors will depend on the volume of water to be pumped out, the head and the pipe size (class) will be determined by these parameters.

Disposal of Underground Water

Mine water should not be discharged into the environment without following the country's environmental regulations. However, the basic points to note are:

- i. Before commencing mining activities, a clear mine water disposal strategy that conforms to the country's environmental regulations must be drawn up.
- ii. Surface settling ponds must be constructed with an outlet of clean water to the environment. Where a concentrator is incorporated into the mining activities, a tailings dam must be constructed with support from accredited consultants.
- iii. In some instances, the ground water is acidic and before disposing this water to the environment, the acid level must be reduced to acceptable level in accordance with the environmental regulation guidelines. The acid level can be reduced by adding such additives as alkaline or lime.

Open Pit Dewatering

The company is equally specialized in open pit dewatering. Open pit dewatering is yet another challenging task in as far as mining operations are concerned.

From an open pit perspective, it is important for the pit not to protrude into a river. If opencast operations affect a river, controls are needed to divert the river around the pit in a sustainable way. If a mining company develops an open pit through a river, they should remember that the river will not be reinstated after mining has ceased. It is therefore, important that the erosion measures and diversion works are sustainable and operate in an environmentally sustainable way.

Following is a listing of these basic dewatering methods:

- i. Drainage ditches at the surface of the mine
- ii. Drainage ditches at the bottom of the mine
- iii. Horizontal drains
- iv. Vertical wells drilled from the surface
- v. Vertical wells drilled from benches or pit bottom
- vi. Dewatering shafts and galleries
- vii. Combination of above listed methods

Selection of the proper method of dewatering is crucial to the success of the operation and depends on several factors.

Dewatering Method Selection

The proper and most feasible dewatering method depends upon the following factors:

- i. geology and hydrogeology of the mine site
- ii. scope of dewatering
- iii. mining method
- iv. cost study

The hydrogeologic investigation of the mine site should be the basis for every dewatering design. Without knowledge of aquifer characteristics like recharge area, general flow direction, thickness and hydraulic conductivity, an efficient dewatering system is difficult to design and implement. The character of primary or secondary aquifer permeability, (intergranular or fractures) is important. Orientation of fracture system in an aquifer with secondary vertical or horizontal permeability can cause success or failure of a dewatering system.

There is a substantial difference in dewatering of confined and unconfined aquifers, especially regarding slope stability. Before the design of an open pit mine dewatering system, an estimate of water inflow into the pit should be performed.

Part of the hydrogeologic study should be the installation of a proper groundwater monitoring system capable of observing the oscillation of water levels; this monitoring system should be installed before the dewatering system is implemented and maintained during the entire mining operation. The fact that water is flowing from horizontal drains which have been installed for stability reasons does not mean that the pore pressure has been sufficiently relieved in strata which is detrimental to slope stability.

The scope of open pit mine dewatering may vary in individual projects. In cases where the ground water inflow into the pit is not high enough to impede the mining activity but high pore pressure in the water bearing strata affects slope stability or slope design, dewatering is oriented toward lowering the potentiometric surface within the zone of potential failures. This may be achieved without draining a great amount of water. Another reason for mine dewatering may be groundwater quality protection. By pumping water from vertical wells, the pollution of water that would otherwise seep into the pit and be pumped out from the sump, can be prevented.

To support mines in dewatering both underground and on surface, the company has a special team of dewatering engineers who may be called upon at any time.

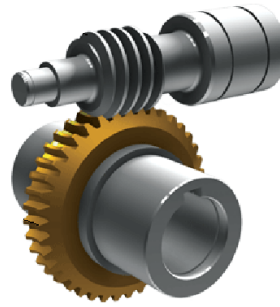
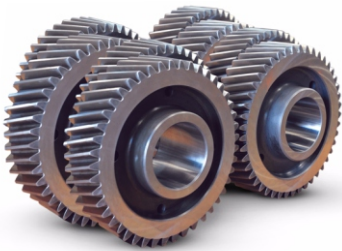
OUR PRODUCTS RANGE



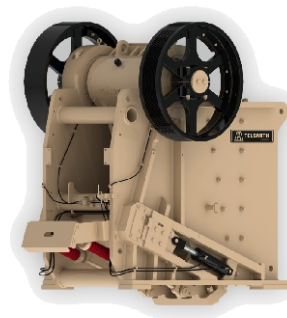
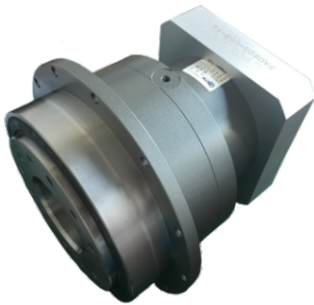
Submersible & Centrifugal Pumps



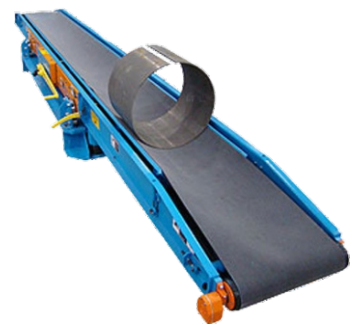
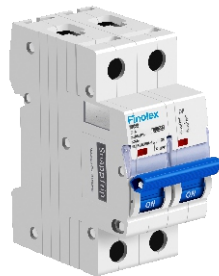
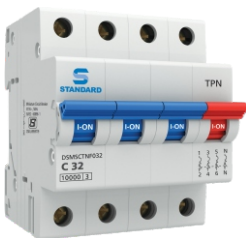
Jaw Crusher Spares



Core Crusher Spares



Speed Reduction gear box, Vibrator, Crushers



Electrical Switches, Conveyor Belts

HAZARDOUS AREAS & EXPLOSIVE ATMOSPHERES



Muleka Investments Limited

Has trained and experienced electricians that are certified for work in hazardous areas and explosive atmospheres such as FPSOs and Drilling Rigs.

Hazardous areas services include:-

- Installations
- Repairs and maintenance
- Inspection, testing and reporting
- Design services Include:-
 - Complete design packages
 - New build electrical system design (AC and DC)
 - Switchboard, starter and control panel design
 - Alarm and monitoring system design
 - Generator control system design
 - Electrical power generation, protection and distribution design
 - Electrical drafting service

Installations services include:-

- Cable supply, Installation and termination
- Complete electrical system install
- Electrical power generation, protection and distribution installations
- Control system installations
- Air conditioning / refrigeration electrical systems

MAINTENANCE AND REPAIR

Muleka Investments Limited is able to provide emergency and scheduled maintenance and repair services to a vast array of clients.

Maintenance and repair services include:-

- Emergency response repairs (e.g. Fire damage repairs)
- Electrical power generation, protection and distribution maintenance and repair
- Mechanical services
- Rewinds (transformer, generator, electric motor, fan)
- Generator / alternator control system service and inspections



CIVIL ENGINEERING



We undertake design plan and rehabilitation of any kind of general building /contracting.

Painting

Custom painting used and existing equipment and facilities are available at Muleka Investments Limited. Our shop is equipped to handle jobs of varying size as we feature:-

- Competent Industrial Painters
- Conventional Spray Guns
- Red Oxide

Water supply systems

We undertake construction, installation and commissioning of water supply systems covering elevated concrete water supply tanks, control rooms and pipe networks to clients satisfaction.

Mechanical Engineering

We are specialists in designing testing's and commissioning.

Steel Supply and Fabrication

All of our steel fabrication products are built to client specifications and are custom fabricated according to the needs and requirements of the clients. Steel is sourced from internationally accredited manufacturers around the world.

Manufacture

Muleka Investments Limited is able to manufacture products to meet your specific application, requirements and the installed environment. All goods are manufactured to the highest level of quality and are managed by our ISO 9001 Quality certified System.

Personal Qualifications and Passes Include

- Electrical workers
- Hazardous Area (Install, Maintain, Test, Inspect & Report)
- Advanced Rigger



DESIGN & DEVELOPMENT

Muleka Investments Limited has a strong belief in advancing with the times and employ state of the art technology and principals throughout our design and development processes. As specified in our design control procedure, the finished design is a result of not one, but several members of a committee who are qualified and experienced in the design field. The combination and comparison of ideas and knowledge from the committee results in a more efficient, competitive, safe and reliable design. The design process interfaces with the clients organization to ensure all requirements are adequately addressed.

We will cater to a full range of project needs including maintenance, breakdown service, civil works, building maintenance, and general contracting. As well as offering electrical solutions, we also manufacture switchboards and carry out rotating machinery (i.e. generators, alternators, electric motors and fans), transformer installations and repairs. Complete design, manufacture, supply, installations, testing and certification packages are available to make your next project run smoothly and on time.

For more information on any of our services, please contact us.



SHOWCASE OF PRODUCTS



Complete Sub Station



Fire Suppression System



Plasma Oxyfuel Cutter



Electronic Chain Hoists



ICT Equipment & Accessories



Scalping Screen



Centrifugal Pumps



Industrial Valves

SHOWCASE OF PRODUCTS



Belt Driven Conveyor



Air Purifier



Conveyor Rollers



Fasteners



Industrial Fans



High Voltage Cables



Refractor Bricks



Cables Clamps

TRAINING



The company employs a high quality of managerial and administrative staff, their performance being reviewed and assessed annually. As a company we are committed develop the potential of staff and great care is taken to ensure assignment to tasks for which they are suitably qualified and experienced.

OPERATIVE EFFECTIVENESS

The company has an ongoing programme to improve the productivity of operatives on site and find the following measures most effective in achieving this objective. Its work force is directly employed, with the expectation of items of work which are sublet. The working of excessive hours is discouraged, but high productivity is achieved by operating a production bonus which encourages 100% effort for good rewards, without the deterioration of standards which can be the consequence of long working hours.

Healthy, Safety & Environment (SHEQ)



Muleka Investments Limited is in the process of developing and implementing a system of Safety, Health, Environment & Quality (SHEQ) system in order to meet international requirements. This will ensure that our work places and sites are safe for our employees and other stakeholders. The systems will also enable us to provide high quality products. Directors, management and all staff are accountable to safety occupational health and environmental issues and the company has allocation budget specially for safety health and occupational.

Safety, Health, Environment & Quality (SHEQ) is a mandatory requirement for the company to comply with the national policy on environmental protection and seek to implement the corporate objectives listed below:-

- Prevent and minimize environmental impact
- Maintenance of safety practice and environmental control
- Minimization of waste and conservation of resources
- Compliance with statutory requirement.

It is a mandatory requirement for the company to comply with the national policy on environmental protection and seek to implement the corporate objects listed below:-

- Prevent and minimize environmental impact
- Maintenance of safety practice and environmental control
- Minimization of waste and conservation of resources
- Compliance with statutory requirement.



OUR HEAVY DUTY EQUIPMENT

We have a range of earth moving and construction heavy duty equipment suitable for any open pit mining and construction projects. Our emphasis is in using the best on the market to deliver the best product for our discerning customer.



OUR HEAVY DUTY EQUIPMENT



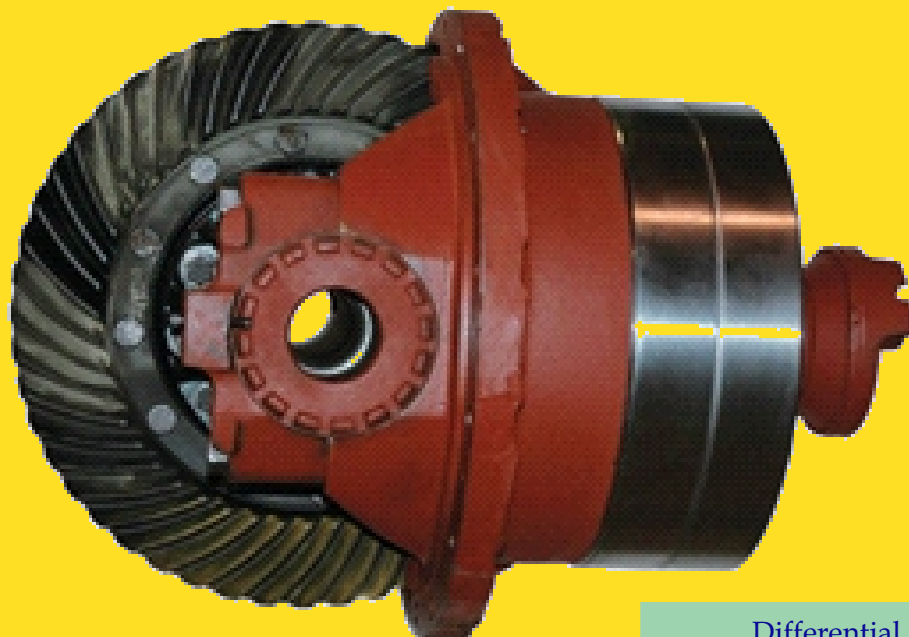
OIL AND FILTERS PRODUCTS



OUR HEAVY DUTY EQUIPMENT



ST 14 Loader



Differential

SHOWCASE OF PRODUCTS



Caterpillar Parts Original
Engine Models: C05 - C2.2, C3.4



Cummins Parts Original
Engin Models: B3.3, 4B, 6B, ISB



Perkins Power Engines Parts Original



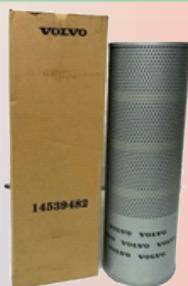
John Deere Parts Original



Detroit Diesel Parts Original
Automotive & Mining



Volvo Penta Parts Original
Industrial



Hydraulic Filter Heavy



Cartridge Drain Filter Volvo

SHOWCASE OF PRODUCTS



Hydraulic Filter Heavy Construction Equipment Excavator



Cartridge Drain Filter Volvo



NEW Caterpillar (CAT) 9X-8600 or 9X8600 O-RING



Fuel Filter



Caterpillar-Second-Element-Air-Filter



Caterpillar Filter replacement

SHOWCASE OF PRODUCTS



HYDRAULIC FILTER ELEMENT



CATERPILLAR-OEM-SEAL-GASKET



Caterpillar YOKE



Cat-Breather-7T-3251

SHOWCASE OF PRODUCTS



CAT-255-4888-Guage-AS-0



Caterpillar strip 9S8246



PIN CAT



Transm ission Filter



SHOWCASE OF PRODUCTS



3KR1-3KR1-EA-14-Engine-Water-Pump



Wheel Loader Engine Parts Air Compressor



OEM ML-034 Fuel Filter Element

SHOWCASE OF PRODUCTS

Suppliers of Truck Parts

			
FAG BEARINGS, CYLINDERS GREASE & REPAIR KITS	LASO WATER, OIL PUMPS AND REPAIR KITS	FTE AUTOMOTIVE HYDRAULIC CYLINDER AND REPAIR KITS	BALO CRANKSHAFT AND CAMSHAFT
BF FLYWHEELS, CAMSHAFT	Garrett by Honeywell TURBOCHARGERS	Febi SUSPENSION BOLTS AND CLAMPS	TRW VALVES AND SLIDES
GOETZE RINGS, LINERS, GASKET AND SEALS	Knorr-Bremse BRAKE VALVES-BOOSTERS AND BRAKE PARTS	BorgWarner Turbo Systems KKK TURBOCHARGER AND KITS	Hengst FILTER
SKF ENGINE BEARINGS, LINERS, PISTONS, RINGS	Sachs CLUTCHES AND SHOCK ABSORBER	MAHLE PISTONS, LINERS, RINGS AND FILTERS	WABCO AIR BRAKE PARTS AND REPAIR KITS
SKF BEARINGS AND LUBRICATION SYSTEM	Fleetguard FILTERS	WIX FILTERS	TIMKEN BEARING AND SEALS
elring Das Original GASKETS	BOSCH	GLYCO ENGINE BEARINGS AND BUSHES	HOLSET TURBOCHARGERS
LUK CLUTCHES	LEASCHNER SUSPENSION AND STEERING MECHANISM	Schwitzer Turbochargers	Continental CONTITECH DRIVE BELTS
DIESEL TECHNIC SPAREPARTS	Euroicambi GEARS & DIFFERENTIAL	ORIGINAL KM AUTO TECHNIK VALVES AND CLUTCH KIT	MEYLE SUSPENSION AND BRAKEPARTS
Nival PISTON & ASSEMBLIES	Glacier Vorelverell ENGINE BEARINGS AND BUSHES	TRUCKTEC QUALITY SPAREPARTS	VICTOR REINZ GASKETS

SHOWCASE OF PRODUCTS

Suppliers of Gensets



SHOWCASE OF PRODUCTS

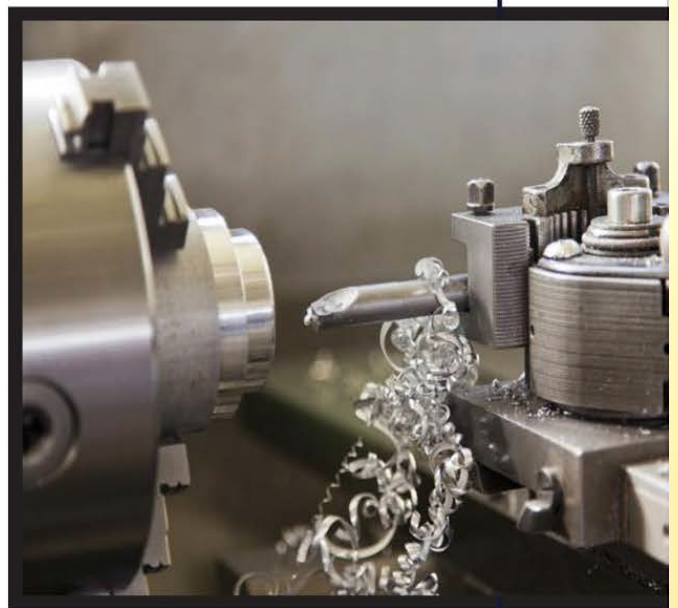


GE Power Genset Powered by Cummins Engine (50Hz)

Generator Model	Standby Power		Prime Power		Engine Model	Prime Power (kW)	Standby Power (kW)	Cylinder	Bore*Stroke (MM)	Consumption (L/H)	Dimension (L*W*H)	
	kVA	kW	kVA	kW							Open Type (CM)	Soundproof (CM)
GE-C25	28	22	25	20	4BT3.9-G1	24	27	4	102*120	7.6	182*76*128	220*104*158
GE-C38	41	33	38	30	4BT3.9-G1	36	40	4	102*120	7.6	182*76*128	220*104*158
GE-C40	44	35	40	32	4BT3.9-G2	36	40	4	102*120	7.8	182*76*128	220*104*158
GE-C56	62	50	56	45	4BTA3.9-G2	50	60	4	102*120	12.6	182*76*128	238*104*158
GE-C90	100	80	90	72	6BT5.9-G1	86	92	6	102*120	20.5	223*83*149	276*112*173
GE-C100	125	88	100	80	6BT5.9-G2	92	100	6	102*120	20.5	223*83*149	323*115*178
GE-C120	132	105	120	96	6BTA5.9-G2	110	120	6	102*120	24	223*83*149	323*115*178
GE-C140	154	123	140	112	6BTA5.9-G2	120	130	6	102*120	27.4	223*83*149	323*115*178
GE-C180	200	160	180	144	6CTA8.3-G2	163	180	6	114*135	32	248*88*149	323*115*178
GE-C200	220	176	200	160	6CTA8.3-G2	183	200	6	114*135	42.7	248*88*149	323*115*178
GE-C250	275	220	250	200	6LTA8.9-G2	220	245	6	114*135	53	248*88*149	359*124*203
GE-C300	330	264	300	240	NTA855-G1A	261	287	6	140*152	72	248*88*149	359*124*203
GE-C325	358	286	325	260	NTA855-G1B	284	312.4	6	140*152	72	250*83*150	359*124*203
GE-C350	385	308	350	280	NTA855-G2A	313	343	6	140*152	76	302*110*185	423*144*220
GE-C375	412	330	375	300	NTAA855-G7	370	407	6	140*152	76	302*110*185	423*144*220
GE-C450	500	400	450	360	KTA19-G3	403	448	6	159*159	92.1	340*126*205	463*164*230
GE-C500	550	440	500	400	KTA19-G4	448	504	6	159*159	101.2	340*126*205	463*164*230
GE-C550	605	484	550	440	KTAA19-G5	470	550	6	159*159	121.5	365*164*205	503*184*253
GE-C625	688	550	625	500	KTAA19-G6A	550	610	6	159*159	128.2	365*164*205	503*184*253
GE-C750	825	660	750	600	KTA38-G2	664	731	12	159*159	161.8	450*178*243	20ft container
GE-C800	880	704	800	640	KTA38-G2B	711	789	12	159*159	160.2	450*178*243	20ft container
GE-C900	100	800	900	720	KTA38-G2A	813	895	12	159*159	182.4	450*178*243	20ft container
GE-C1000	1100	880	1100	880	KTA38-G5	880	970	12	159*159	199.4	450*178*243	20ft container

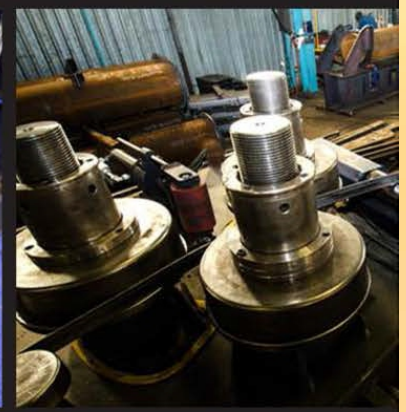
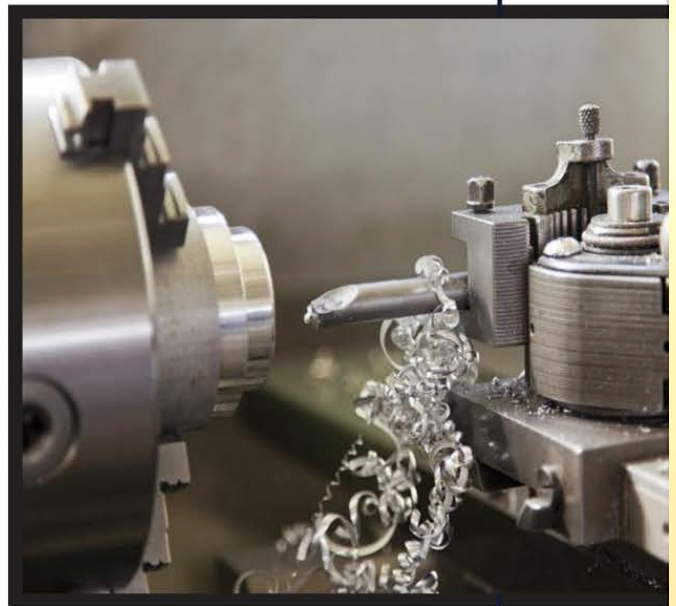
EQUIPMENTS & MACHINERY

- Laser-Cutting
- Water-jet Cutting
- Plasma Cutting
- Flame Cutting
- CNC Press Brakes
- CNC Sectional Rolling Machines
- CNC Plate Rolling Machines
- CNC Pipe Bending Machines
- CNC Milling and Turning
- CNC Vertical & Horizontal Boring Mills
- CNC Robotic Welder

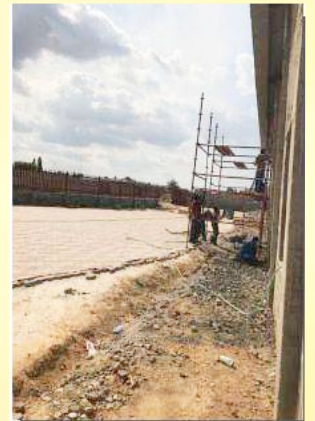


ENGINEERING EQUIPMENTS & MACHINERY

- Laser-Cutting
- Water-jet Cutting
- Plasma Cutting
- Flame Cutting
- CNC Press Brakes
- CNC Sectional Rolling Machines
- CNC Plate Rolling Machines
- CNC Pipe Bending Machines
- CNC Milling and Turning
- CNC Vertical & Horizontal Boring Mills
- CNC Robotic Welder



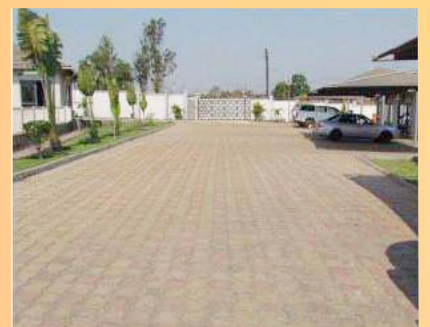
SHOWCASE OF CONSTRUCTION WORKS



Church Construction: Riverside - Kitwe



Feeder Roads on the Copperbelt & Drainage Systems



Muleka Flats - Kitwe & Paving Works: Kitwe

PRODUCTS - OE & OEM PARTS

Price Competitive: We source our products directly from the point of Supply-Europe, America & Asian countries.

Work Force: Our professionally managed TEAM. Quotes, product informations & customer queries are attended & sent with in specified deadlines.

Technical Abilities: We make sure we Supply the Products according to the Customer Specifications & Drawings.

Logistics & Shipping: Our deliveries are managed professionally by trained personels to reach the customers with in the specified deadlines and in excellent conditions.

We are spiring to become leading organization serving Truck parts, Construction & Mining Heavy Equipment & Machinery parts, Diesel Engine parts, Power generator.

Companies Form 7

Company Registration No. 87627
Serial No. 1136518



Republic Of Zambia

**CERTIFICATE OF INCORPORATION
OF A PRIVATE COMPANY LIMITED BY SHARES**

(Section 10)

This is to certify that MULEKA INVESTMENTS LIMITED is on and
from the 15th day of **October 2010** incorporated as a private company limited by shares.

Given under my hand and seal at Lusaka, Zambia, this 15th day of **October, 2010**.




L.S. Thole
.....
Assistant Registrar of Companies

(Note that this certificate is not valid unless the official seal of the Registrar of Companies has been affixed. Further, the issuance of this certificate does not entitle the company to commence business until S. 18 on minimum capital requirements for a private company is satisfied).

General Tax Clearance Certificate

TPIN: 1002014629

Jurisdiction: ISMTO Lusaka Province

Taxpayer Name: MULEKA INVESTMENTS LIMITED
Physical Address: PLOT NO. 483 WARTHOG WAY KABULONGA
Lusaka



Province: LUSAKA PROVINCE

Date: 27/02/2024

Email: MULEKAINVESTMENTSLTD@GMAIL.COM

Certificate Number: 2443612990

Contact Number: 0978369740

Dear Sir/Madam

RE: TAX CLEARANCE CERTIFICATE FOR MULEKA INVESTMENTS LIMITED - SECTION 81B (CAP 323)

This is to certify that MULEKA INVESTMENTS LIMITED trading as MULEKA INVESTMENTS LIMITED with TPIN 1002014629 is duly registered for tax purposes.

In addition, this tax clearance certificate has been issued to MULEKA INVESTMENTS LIMITED trading as MULEKA INVESTMENTS LIMITED pursuant to section 81 B of the Income Tax Act (CAP 323).

This certificate is valid up to 30/06/2024.

Accordingly, in terms of section 81 B of the Income Tax Act, for the duration of this certificate, the above named is free to conduct business in line with the trading license held.

Please note that any established act of non-compliance with the provisions of the Income Tax Act shall invalidate this Certificate.

You are advised to always scan the QR code to verify the validity of this Tax Clearance Certificate especially when submitted on a date different from the print date.

Yours Faithfully,

JOSEPH NONDE

Commissioner Domestic Taxes
Zambia Revenue Authority

NOTE: This notice has been issued for and on behalf of the Commissioner General

Zambia Revenue Authority Domestic Taxes Division
Enquiries Email: advice@zra.org.zm Website: www.zra.org.zm
ZRA National Call Center: 4111



Value Added Tax Registration Certificate

This is to certify that taxpayer whose details are shown below been registered with Zambia Revenue Authority for Value Added Tax purposes.

Section A-Taxpayer Information

Taxpayer Identification Number	1002014629
Taxpayer's Name	MULEKA INVESTMENTS LIMITED
Taxpayer's Trading Name	MULEKA INVESTMENTS LIMITED
Taxpayer's Physical Address	PLOT NO 45 BOMA STREET, NKANA EAST, KITWE, COPPERBELT PROVINCE, ZAMBIA

Section B-Vat Registration Details

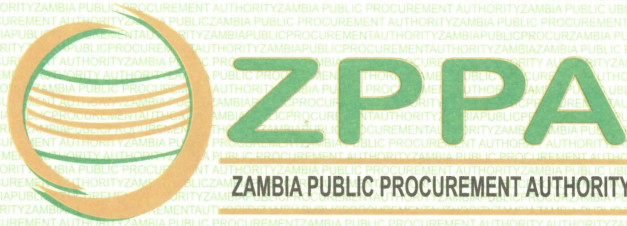
Value Added Tax Account Name	MULEKA INVESTMENTS LIMITED-VAT
Effective Date of Registration	14/03/2014

This certificate is issued under authority of Value Added Tax Act, 1995 on behalf of commissioner - Domestic Taxes. This certificate will remain in force until it is cancelled.

[Signature]
 For/Commissioner – Domestic Taxes

Issue Date: 27/03/2015





ZAMBIA PUBLIC PROCUREMENT AUTHORITY

Welcome to the e-Tendering Platform

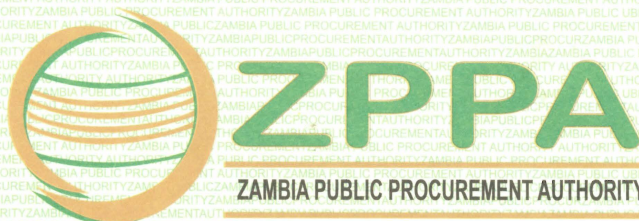
This is your registration information as at 08/01/2024:

Supplier details	
Organisation name	MULEKA INVESTMENTS LIMITED
Company Registration Number	120100087627
Tax Payer's Identification Number	1002014629
ZPPA Registration Number	4690
Company type	Local Company
Address	P.O.BOX 42331
Postal code	
City	Kitwe
Country	Zambia
Phone Number	0978369740
Shareholders	
CEEC category	Citizen Owned
Valid Until	08/01/2025

You have registered in accordance with the Tender Regulations (Public Procurement Act No 12 of 2008) of the laws of Zambia to supply Goods and Services to Public Institutions in the following categories:

Areas of Interest

- 14000000-Paper Materials and Products
- 20000000-Mining and Well Drilling Machinery and Accessories
- 40000000-Distribution and Conditioning Systems and Equipment and Components
- 32000000-Electronic Components and Supplies
- 47000000-Cleaning Equipment and Supplies
- 22000000-Building and Construction Machinery and Accessories
- 11000000-Mineral and Textile and Inedible Plant and Animal Materials
- 21000000-Farming and Fishing and Forestry and Wildlife Machinery and Accessories
- 55000000-Published Products
- 39000000-Electrical Systems and Lighting and Components and Accessories and Supplies
- 25000000-Commercial and Military and Private Vehicles and their Accessories and Components
- 45000000-Printing and Photographic and Audio and Visual Equipment and Supplies
- 50000000-Food Beverage and Tobacco Products



ZAMBIA PUBLIC PROCUREMENT AUTHORITY

- 4400000-Office Equipment and Accessories and Supplies
- 2600000-Power Generation and Distribution Machinery and Accessories
- 4300000-Information Technology Broadcasting and Telecommunications
- 4200000-Medical Equipment and Accessories and Supplies
- 3000000-Structures and Building and Construction and Manufacturing Components and Supplies
- 5200000-Domestic Appliances and Supplies and Consumer Electronic Products
- 4800000-Service Industry Machinery and Equipment and Supplies
- 5600000-Furniture and Furnishings
- 1300000-Resin and Rosin and Rubber and Foam and Film and Elastomeric Materials
- 2700000-Tools and General Machinery
- 7000000-Farming and Fishing and Forestry and Wildlife Contracting Services
- 2400000-Material Handling and Conditioning and Storage Machinery and their Accessories and Supplies
- 25202001-Spacecraft solar cells
- 25202002-Spacecraft solar arrays
- 26111607-Solar generators
- 26131507-Solar power plants
- 32111508-Solar diodes
- 39101603-Solar lamps
- 39111513-Interior solar lighting
- 39111527-Solar lighting fixture
- 40101807-Solar heating units
- 41114407-Solar radiation surface observing apparatus
- 49241706-Solar blanket
- 49241709-Solar blanket reels
- 60104701-Solar collecting devices
- 60104702-Solar kits
- 83101806-Rural electrical power distribution
- 86101505-Rural youth or farmers vocational training services
- 93141902-Rural investment services
- 93141904-Agricultural or rural cooperatives services
- 93141907-Womens services in agricultural production or rural development
- 8300000-Public Utilities and Public Sector Related Services
- 93141900-Rural development
- 7700000-Environmental Services
- 4200000-Building and Construction and Maintenance Services
- 7600000-Industrial Cleaning Services
- 7800000-Transportation and Storage and Mail Services



**NATIONAL COUNCIL FOR CONSTRUCTION
CERTIFICATE OF CONTRACTOR REGISTRATION**

This is to certify that

MULEKA INVESTMENTS LIMITED

has in terms of the NCC Act No. 10 of 2020 been registered in

GRADE 1

CATEGORY B

General Building and Housing

(Zambian-Citizen Owned)

**FOR THE PERIOD JANUARY 2024 TO DECEMBER 2024 WHICH ENTITLES THEM TO ENTER INTO
CONSTRUCTION WORKS CONTRACTS IN ACCORDANCE WITH THIS GRADE AND CATEGORY**

Executive Director

Registration No: 22V59-1BZCO

429-6/ 18549



Director-Registration & Regulation

Serial No: NCCZCO/1B13-00057

Certificate valid only up to 31 December 2024



September 30, 2021

To Whom It May Concern

RE: ENDORSEMENT FOR PREFERENTIAL PROCUREMENT

This is to confirm that **MULEKA INVESTMENTS LIMITED** has been duly registered, in accordance with the Citizens Economic Empowerment Act No. 9 of 2006 for purposes of satisfying the requirements of Statutory Instrument No. 36 of 2011 (Preferential Procurement Regulations), in the following category: **CITIZEN OWNED COMPANY**.

The validity period of this categorization is from this **30th Day of September 2021 to 29th September 2022**.

Likando Mukumbuta
Director General
CITIZENS ECONOMIC EMPOWERMENT COMMISSION



**NATIONAL COUNCIL FOR CONSTRUCTION
CERTIFICATE OF CONTRACTOR REGISTRATION**

This is to certify that

MULEKA INVESTMENTS LIMITED

has in terms of the NCC Act No. 10 of 2020 been registered in

GRADE 2

CATEGORY C

General Civil Engineering Works

(Zambian-Citizen Owned)

**FOR THE PERIOD JANUARY 2024 TO DECEMBER 2024 WHICH ENTITLES THEM TO ENTER INTO
CONSTRUCTION WORKS CONTRACTS IN ACCORDANCE WITH THIS GRADE AND CATEGORY**

Executive Director

Registration No. 22V59-2CZCO



Director-Registration & Regulation

Serial No: NCCZCO/ZC13-00079

Certificate valid only up to 31 December 2024

429-6/18554



**NATIONAL COUNCIL FOR CONSTRUCTION
CERTIFICATE OF CONTRACTOR REGISTRATION**

This is to certify that

MULEKA INVESTMENTS LIMITED

has in terms of the NCC Act No. 10 of 2020 been registered in

GRADE 2

CATEGORY R

General Roads and Earthworks

(Zambian-Citizen Owned)

**FOR THE PERIOD JANUARY 2024 TO DECEMBER 2024 WHICH ENTITLES THEM TO ENTER INTO
CONSTRUCTION WORKS CONTRACTS IN ACCORDANCE WITH THIS GRADE AND CATEGORY**

Executive Director

Registration No: 22V59-2RZCO



Director-Registration & Regulation

Serial No: NCCZCO/2R13-00078

Certificate valid only up to 31 December 2024

429-6/ 18550



WORKERS' COMPENSATION FUND CONTROL BOARD

EMPLOYER COMPLIANCE CERTIFICATE

THIS IS TO CERTIFY THAT

MULEKA INVESTMENT LIMITED

EMPLOYER ACCOUNT NUMBER: **0004570568/1901**

IS REGISTERED WITH THE WORKERS' COMPENSATION FUND CONTROL BOARD AND IS COMPLIANT WITH THE PROVISIONS OF THE WORKERS' COMPENSATION ACT NO.10 OF 1999 OF THE LAWS OF ZAMBIA

AUTHORISED SIGNATORY

CERTIFICATE NUMBER

ECN_0000102189

DATE ISSUED

11/01/2024

VALID UP TO

31/12/2024



WORKERS' HAVE A RIGHT TO COMPENSATION



National Pension Scheme Authority

COMPLIANCE CERTIFICATE

Issued to

MULEKA INVESTMENTS LIMITED

KITWE

Employer Number **1738987**
This certificate is Valid up to 31st March 2024



Issuing Authority

General Experience

Contractor's Legal Name: MULEKA INVESTMENT

NO.	Contract Identification	Contract Value
1	<p>Contract No: MOD/W/MP/097/17</p> <p>Brief Description of the Works performed by the Contractor: Construction of New Sewer System for Stage One (01) 80No. Housing Units at Zaf Kabwe Name of Employer: Ministry of Defense</p> <p>Address: Kabwe</p>	K 5,360,511.26
2	<p>Contract No: ZICTA/PU/037/17</p> <p>Brief Description of the Works performed by the Contractor: Construction of a Guard House, Palisade Fence, Wall fence and a Drive way</p> <p>Name of Employer: ZICTA</p> <p>Address: Lusaka.</p>	K 625,305.12
3	<p>Contract No: MHE/SSSTEP/G/P11/16</p> <p>Brief Description of the Works performed by the Contractor: Supply and Delivery of ICT Equipment</p> <p>Name of Employer: Ministry of Higher Education</p> <p>Address: Lusaka</p>	K 2,595,347.54
4	<p>Contract No: MOE/ORD/STC/001/2014</p> <p>Brief Description of the Works performed by the Contractor: Supply, Delivery, and Assembly of Educational Equipment.</p> <p>Name of Employer: Ministry of Education, Science, Vocational Training and Early Childhood</p> <p>Address: Lusaka</p>	K 84,300,300.00
5	<p>Contract No:</p> <p>Brief Description of the Works performed by the Bidder: Supply and Delivery of Switch Gear Accessories</p> <p>Name of Employer: ZESCO</p> <p>Address: Lusaka</p>	\$ 357,213.52

General Experience

Contractor's Legal Name: MULEKA INVESTMENT

NO.	Contract Identification	Contract Value
6	<p>Contract No: ZESC/055/2/2017</p> <p>Brief Description of the Works performed by the Contractor: Supply and Delivery of various stay wire and 11KV XLPE Cables Lot 3 and 4</p> <p>Name of Employer: ZESCO</p> <p>Address: Lusaka</p>	\$ 426,480.00
7	<p>Contract No:</p> <p>Brief Description of the Works performed by the Bidder: Supply and Delivery of various types of Fasteners</p> <p>Name of Employer: ZESCO</p> <p>Address: Lusaka</p>	K 12,259,593.51
8	<p>Contract No: PPA4071ZMB1801100018361490312545</p> <p>Brief Description of the Works performed by the Contractor: Construction of a Telecommunication Tower and Related External Works</p> <p>Name of Employer: HUAWEI TECHNOLOGIES ZAMBIA</p> <p>Address: Lusaka.</p>	K 3,211,534.00
9	<p>Contract No. MPC 084-2018, Brief description of the works performed by the contractor, construction of steel works and assorted works at Zambia Air Force Headquarters. Name of the Employer: MOD</p>	K1,477, 648,02
10	<p>Contract No. MOD/w/MPC/031/19 Tender for the Proposed Construction Works for Completion of the VVIP Ward at ZAF Headquarters Hospital. Name of Employer: MOD</p>	K6,485,049.35
11	<p>Contract No. MWS/TSU/W/119/10/2020, Rehabilitation and Alterations of existing VIP house at Golf Course in Ndola, Contract No. MWS/PSU/W/119/10/2020 Name of the Employer: Ministry of Works and Supply</p>	K6,998,450.87
12	<p>Contract No. MLG/W/51/26/2020 Contract for periodic maintenance of Matipa Mubila Road, 34.1 Km in Northern province of Zambia. Employer: Ministry of Local Government and Housing</p>	K63,304,541.26
13	<p>Contract No. MLG/W/45/26/2020 Contract for periodic maintenance of Mwape Kalunga Fikonkonta Road, 52.2 Km in Chilubi Northern province of Zambia. Employer: Ministry of Local Government and Housing</p>	K96,061,053.00
14	<p>Ministry of Infrastructure Housing and Urban Development: Rehabilitation works at Government House, contract No. 120/09/2021</p>	K495,430.26



**MULEKA
INVESTMENTS LTD**

Contact Details

Lusaka Office ■ Kitwe Office

Plot No. 483 Off Warthog Way
Lusaka

Contact: +260 969 374 795
+260 965 888 832

Plot No.3037Kabwe Road
Industrial Area - Kitwe

Contact: +260 969 374 795
+260 977 656 540 / 961 518 422

Email: mulekainvestmentsltd@gmail.com / info@mulekainvestments.com



**MULEKA
INVESTMENTS LTD**

Contact Details

Lusaka Office ■ Kitwe Office

Plot No. 483 Off Warthog Way
Lusaka

Contact: +260 969 374 795
+260 965 888 832

Plot No.3037Kabwe Road
Industrial Area - Kitwe

Contact: +260 969 374 795
+260 977 656 540 / 961 518 422

Email: mulekainvestmentsltd@gmail.com / info@mulekainvestments.com