



CIMS
ZAMBIA

Corporate Profile

A Focused Equipment Rental and Industrial Services Business

www.wacointernational.co.za

We are
WACO

We are CIMS Zambia

Enabling A Better Tomorrow, Every Day.

Established in 2005, and initially known as Waco Africa, CIMS Zambia is a focused equipment rental and industrial services business whose core activities include the rental and sale of formwork and scaffolding as well as relocatable buildings. CIMS Zambia is able to bring all of these professional services to the Zambia market.

Through our various operating divisions namely Waco Kwikform, Waco Africa, Waco SGB and Waco Modular, the company has been involved in numerous construction and industrial projects in Lusaka, Siavonga, Mongu, Chipata, Mkushi, Ndola, Kitwe, Chingola, Mufulira, Solwezi, Kalumbila, Chililabombwe, Mazabuka, Livingstone, Mansa, Kabwe & Luangwa. We are proudly local, and are privileged to be able to draw on the expertise and market experience of our Johannesburg-based holding company, Waco Africa, which has operations in many sub-Saharan countries in Africa.



Inspired by Values, Driven by Results

We believe that the foundation of our company is the people and the values that they believe in. CIMS Zambia has the same steadfast business values embedded into its fabric as our Waco Africa partners.

Transparency

Accountability

Performance

Best Practice

Teamwork

These are 'living values' that guide the behaviour of every staff member, every day. They inspire the 'can do' attitude that permeates the company and drives CIMS Zambia to deliver results that exceed our clients' expectations.

We are Waco

CIMS Zambia is a subsidiary of Waco Africa which is one of Africa's largest industrial services businesses. In turn, Waco Africa is the strategic spear for Waco International which operates focused equipment rental and industrial services business in Africa, Australasia and the United Kingdom.

Our Core Business

CIMS Zambia mirrors the Waco Africa strategy of developing and maintaining the leading brands in their respective industries. These include:

Formwork, Shoring & Scaffolding:



Exclusive Distribution Partner
for Doka in Sub-Saharan Africa



Scaffolding and Insulation



Relocatable Modular Buildings and Camps



Suspended Platforms & Telehandlers



The Waco Africa group combines over 60 years of experience and has the capacity to manufacture and supply large volumes of high-quality products. The result is extensive and comprehensive stockholdings of rental equipment and fleet in all sectors.

Services Snapshot

form-scaff

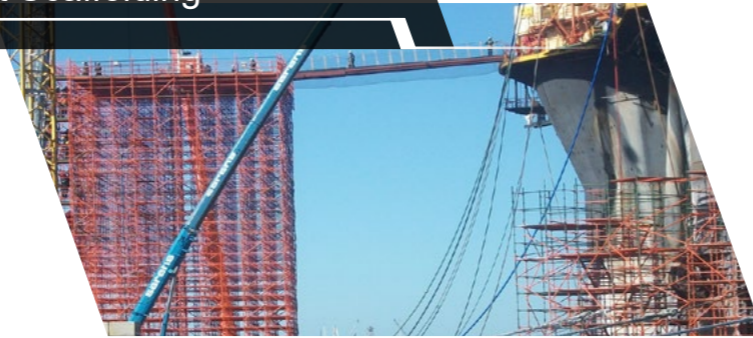


WACO
MODULAR

Forming



Contract Scaffolding



Relocatable Modular Buildings



Shoring



Industrial Maintenance



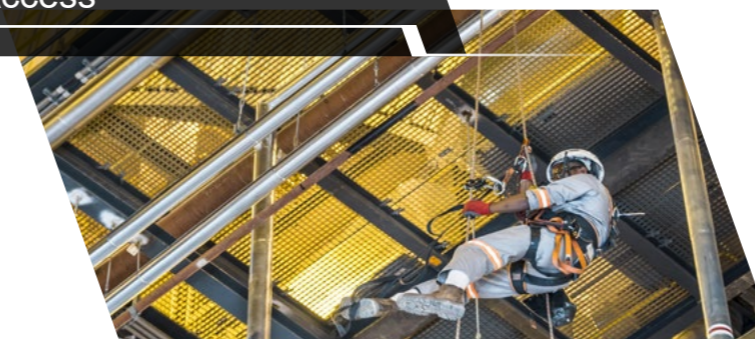
Full-Service Camp Solutions



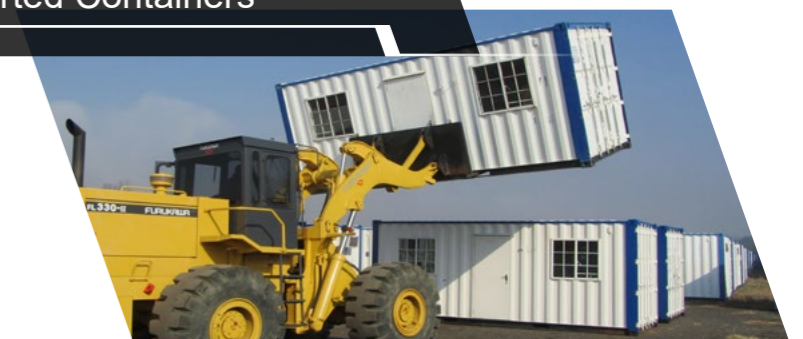
Scaffolding



Rope Access



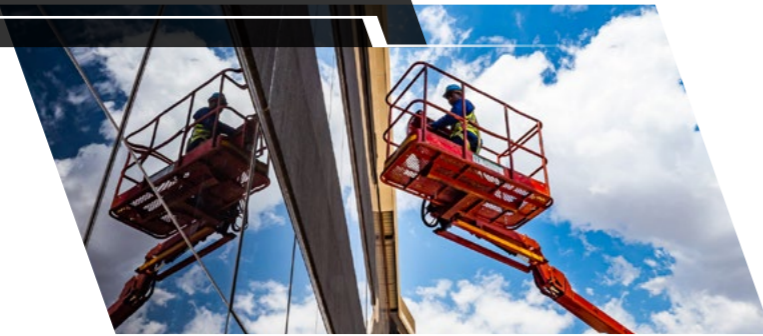
Converted Containers



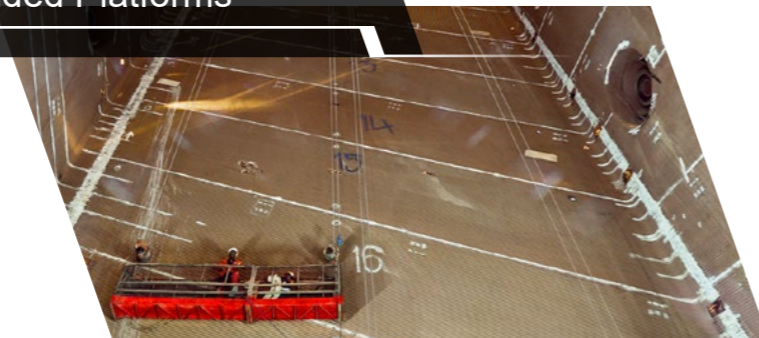
Services Snapshot



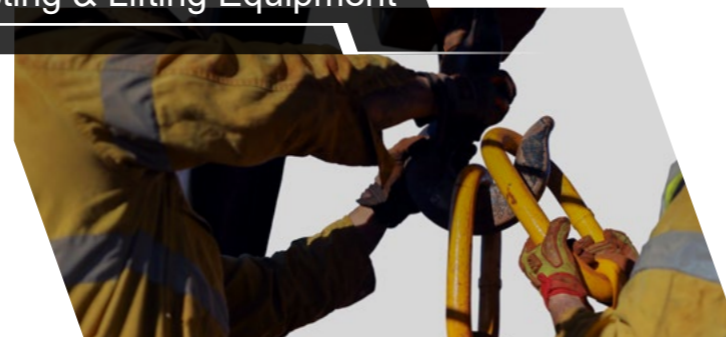
Mobile Elevated Work Platforms



Suspended Platforms



Load Testing & Lifting Equipment



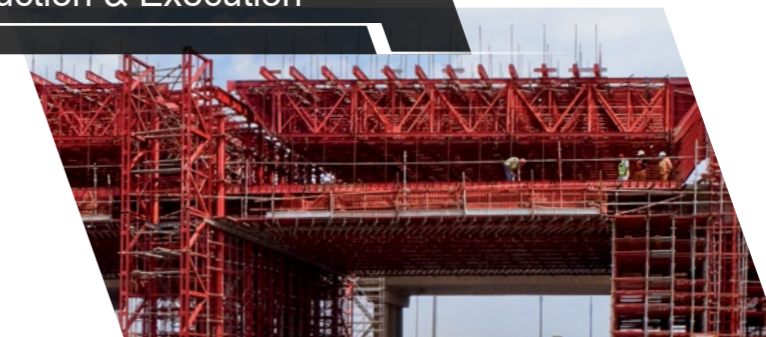
Front-End Engineering & Design



Value Engineering & Testing



Construction & Execution



Support where you need it most

In Zambia, Form-Scaff trades as Waco Kwikform - a division of CIMS Zambia. Form-Scaff is the largest and most significant formwork company on the continent. Since 1963, Form-Scaff has been designing, manufacturing, hiring and selling world-class formwork and scaffolding products and are the market leaders in Africa. In 2019 Form-Scaff became the exclusive distribution partner for Doka in sub-Saharan Africa. Doka is one of the most technologically advanced formwork companies in the world and brings enormous experience and process expertise to the organisation.

Products

The Form-Scaff and Doka formwork product range provide a solution for any type of column, wall or slab formwork requirement. They are world-class forming solutions that can be applied to all building, construction and civil engineering projects and include well-known brand names such as Kwik-Deck, Econo-Form, Multi-Form, DokaFlex, DokaDek and Frami.

Scaffolding applications are delivered through Form-Scaff's high quality Kwik-Stage system – southern Africa's industry benchmark scaffolding system – as well as the highly renowned galvanized DokaScaff Uni system.

Services

The Form-Scaff product range is supported by turnkey services including: detailed design and engineering services, equipment management, on-site coordination and technical support and training.



Committed to Performance Excellence

SGB-Cape has a performance-driven culture centred on a commitment to quality, service delivery, safety and competitive pricing. SGB-Cape is one of the biggest scaffolding and industrial maintenance companies in Africa.

SGB-Cape specialises in project and plant maintenance, new builds and shutdowns. It provides the following services:

Access Scaffolding

With the ongoing development of scaffolding systems and components, SGB-Cape is able to provide continuously improved access solutions which in turn deliver improved safety and productivity.

Thermal Insulation and Cladding

SGB-Cape offers the supply and application of thermal insulation and cladding systems with a temperature range of between 200 - 600 degrees centigrade. These services are designed to meet the requirements of specific industry sectors including the petrochemical, oil refining, power generation and paper and pulp, as well as general process engineering applications.

Industrial Corrosion protection

High-pressure surface preparation and cleaning, abrasive blasting, ultra-high water blasting (UHP) and the application of specialised coatings, including fireproofing, are additional services undertaken by SGB-Cape.

Industrial Asbestos Removal

SGB-Cape has extensive experience in the safe removal of asbestos. The company's services also include asbestos safety surveys.

Marine Scaffolding & Offshore Personnel

SGB-Cape is a leading access scaffolding supplier to the marine ship repair industry, marine mining sector, and oil and gas industries in the coastal areas of southern Africa.

Rope Access

Rope access is an affordable alternative to traditional scaffolding and mobile elevating work platforms. Rope access enables access to hard-to-reach locations quickly, efficiently and with minimal disruption. SGB-Cape are IRATA qualified trainers and operators.



Efficient Space Solutions

Waco Modular provides swift space solutions. From site offices, classrooms, kitchenettes, and ablution facilities to multi-storey buildings. We specialise in the manufacture, delivery, erection, and management of modular building solutions. We offer you the right rental or purchase options, whether you need a converted container, prefab, or modular space.

EzeeSpace - Versatile & Scalable

EzeeSpace is Waco Modular's premier space solution, leading the modular revolution. These versatile and scalable units can be configured to meet the client's current and future space requirements. Built to withstand harsh African climatic conditions, EzeeSpace features a robust steel exoskeleton, fully insulated Chromadeck walls, and built-in gutters and downpipes to weather any storm and prevent leaks. Units require very little or no maintenance.

Turnkey Contractor Camps

Waco Modular designs, constructs, and manages customer-commissioned accommodation camps for the mining, construction, and energy industries. These camps are built to endure Africa's harsh environmental conditions and offer a comprehensive end-to-end solution covering construction, maintenance, services, and hospitality. EzeeSpace units can be easily reconfigured or relocated to meet changing requirements.



www.wacomodular.co.za



Powered Access Sales & Hire

SkyJacks is a leading supplier in the rental and sale of powered access equipment. As the South African sales distributor for Dingli mobile elevated work platforms, Sky Climber hoists, GEDA construction hoists, Faresin telehandlers, and Jekko mini cranes, SkyJacks offers a comprehensive range of high-quality equipment.

Their extensive rental fleet includes Temporary Suspended Platforms (TSPs) and Aerial Work Platforms (AWPs) such as straight and articulated boom lifts (cherry pickers), traditional scissor lifts, and vertical lifts. SkyJacks also sells mini-cranes, telehandlers, and construction hoists.

Aerial Work Platforms

SkyJacks boasts a ready-to-rent fleet of renowned, reliable, and versatile equipment brands, including JLG, Genie, Dingli, JCB, and Easy Lift. For operations requiring quiet or emission-free performance, clients can choose between battery-driven options, hybrids, or full diesel power for enhanced performance.

Temporary Suspended Platforms

SkyJacks supplies stable and secure suspended working platforms that enable teams to work safely and productively at heights. These platforms, also known as swing scaffolds, hanging platforms, swing stages, gondolas, and cradles, are designed, fabricated, and installed by SkyJacks for use in mine shafts, power station boilers, bridges, smoke stacks, industrial plants, and virtually every type of commercial building.

Telehandlers

SkyJacks supplies telehandlers to the construction, maintenance, mining, and petrochemical industries. Its fleet of telehandlers can be fitted with a range of attachments, including forks, material buckets, concrete ladles, and Skyhooks, all easily changeable to suit the application at hand. SkyJacks is also the Southern Africa distributor for the world-renowned Faresin telehandlers.

Mini Cranes

SkyJacks rents and sells Jekko mini cranes, offering precise and powerful solutions for moving and lifting loads on any site or location. From telescopic, crawler, and stabilizer mini cranes for difficult construction sites to small, electric, and eco-friendly options for indoor use, the Jekko range provides the ultimate "pick and move" capability.

GEDA Construction Hoists & Industrial Elevators

SkyJacks offers a range of construction hoists for hire with load capacities from 300kg to 2,500kg, providing the appropriate lift solution for virtually every construction challenge in any industry sector. As the distribution agent for GEDA in South Africa, SkyJacks is proud to offer GEDA's globally renowned safe and secure hoist solutions.

www.skyjacks.co.za

The SkyJacks logo features the company name in a bold, red, sans-serif font. The letter 'S' is stylized with a red horizontal bar extending to the left, creating a distinctive graphic element.

Contact Directory

SGB-Cape - Kitwe
Subdivision 5, Farm 5395
Kitwe Ndola Road
Kamfinsa.
wacozambia@sbgcape.com
+260 96 6994 060

Waco Kwikform - Kitwe
12867 Chingola Road
Chimwemwe (Saloba Business Park)
Kitwe, Zambia
kitwe@kwikform.co.zm
+260 96 6880 009

Waco Kwikform - Lusaka
Plot 397
A/3/B Kafue Road
Lusaka
lusaka@kwikform.co.zm
+260 96 8491 061

Waco Kwikform - Solwezi
Suite 12 Kansanshi Road
Plot no 2945 Solwezi
Zambia
solwezi@kwikform.zm
+260 76 8935 762

Waco Modular - Lusaka
Taonga Ngoma
taongan@wacomodular.com
+260 96 725 1939

Waco Modular - Solwezi
Robert Henderson
roberth@wacomodular.com
+260 96 891 4424

